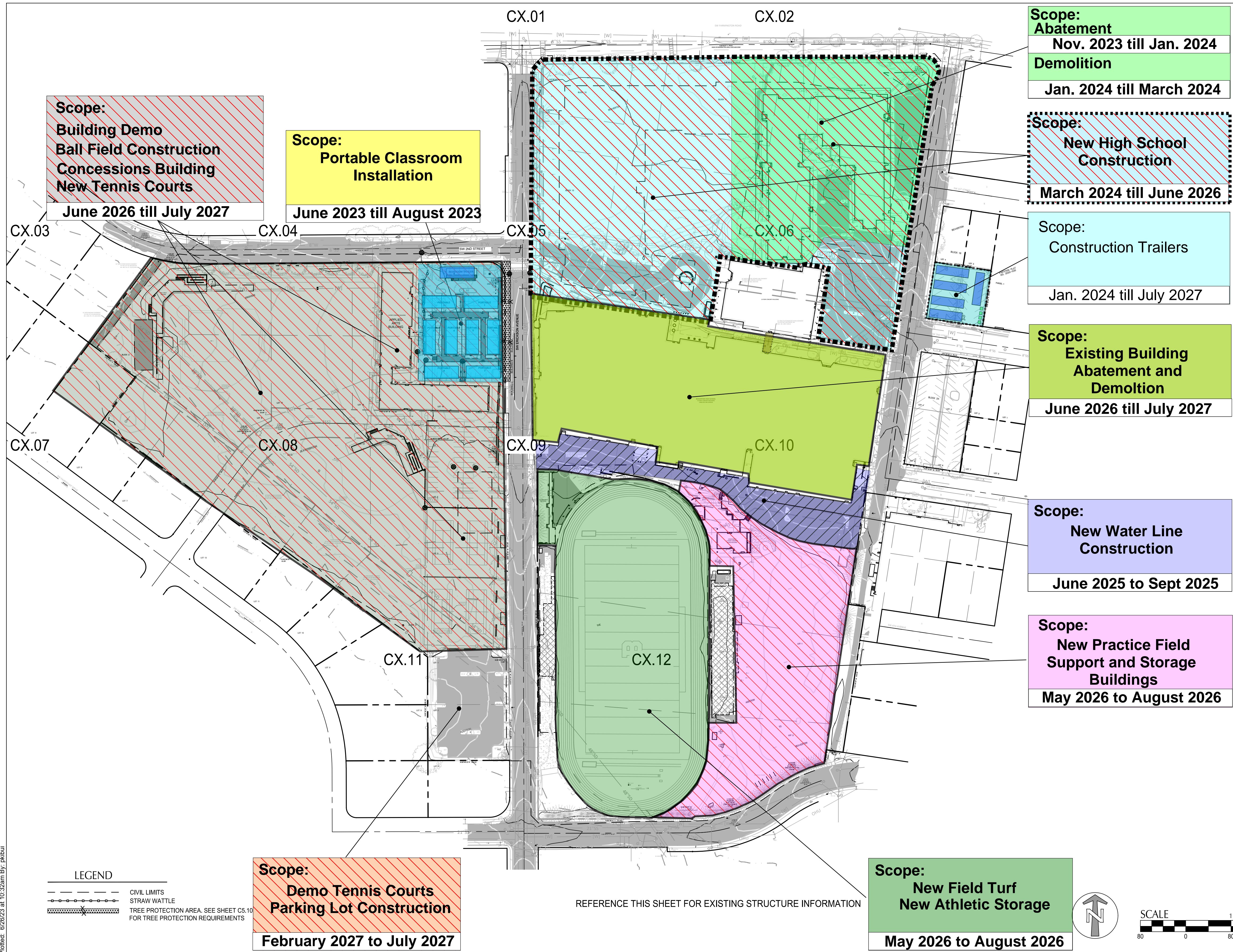


File: N:\c\2021\2100176\_BSD\_Beaverton-HS\CAD\PL\Phase\2100176-C1.0-OV-PHASE-1.dwg TAB:PH.1  
 Plotted: 6/26/23 at 10:32am By: rkhui



**Scope:**  
 Building Demo  
 Ball Field Construction  
 Concessions Building  
 New Tennis Courts  
 June 2026 till July 2027

**Scope:**  
 Portable Classroom  
 Installation  
 June 2023 till August 2023

**Scope:**  
 Abatement  
 Nov. 2023 till Jan. 2024  
 Demolition  
 Jan. 2024 till March 2024

**Scope:**  
 New High School  
 Construction  
 March 2024 till June 2026

**Scope:**  
 Construction Trailers  
 Jan. 2024 till July 2027

**Scope:**  
 Existing Building  
 Abatement and  
 Demolition  
 June 2026 till July 2027

**Scope:**  
 New Water Line  
 Construction  
 June 2025 to Sept 2025

**Scope:**  
 New Practice Field  
 Support and Storage  
 Buildings  
 May 2026 to August 2026

**Scope:**  
 Demo Tennis Courts  
 Parking Lot Construction  
 February 2027 to July 2027

**Scope:**  
 New Field Turf  
 New Athletic Storage  
 May 2026 to August 2026

**LEGEND**  
 - - - - - CIVIL LIMITS  
 - - - - - STRAW WATTLE  
 [Symbol] TREE PROTECTION AREA. SEE SHEET C5.10 FOR TREE PROTECTION REQUIREMENTS

REFERENCE THIS SHEET FOR EXISTING STRUCTURE INFORMATION



**BRIC**  
 ARCHITECTURE, INC.

EXHIBIT 3.A.7

**BEAVERTON**  
 SCHOOL DISTRICT

**kpff**  
 111 SW Fifth Ave., Suite 2600  
 Portland, OR 97204  
 O: 503.542.3868 F: 503.274.4681  
 www.kpff.com

**BEAVERTON HIGH SCHOOL REBUILD**

13000 SW 2ND STREET  
 BEAVERTON, OREGON 97005

BEAVERTON SCHOOL DISTRICT  
 T 503-356-4500



EXPIRATION DATE: 12/31/2024  
 PRELIMINARY NOT FOR CONSTRUCTION

revisions	

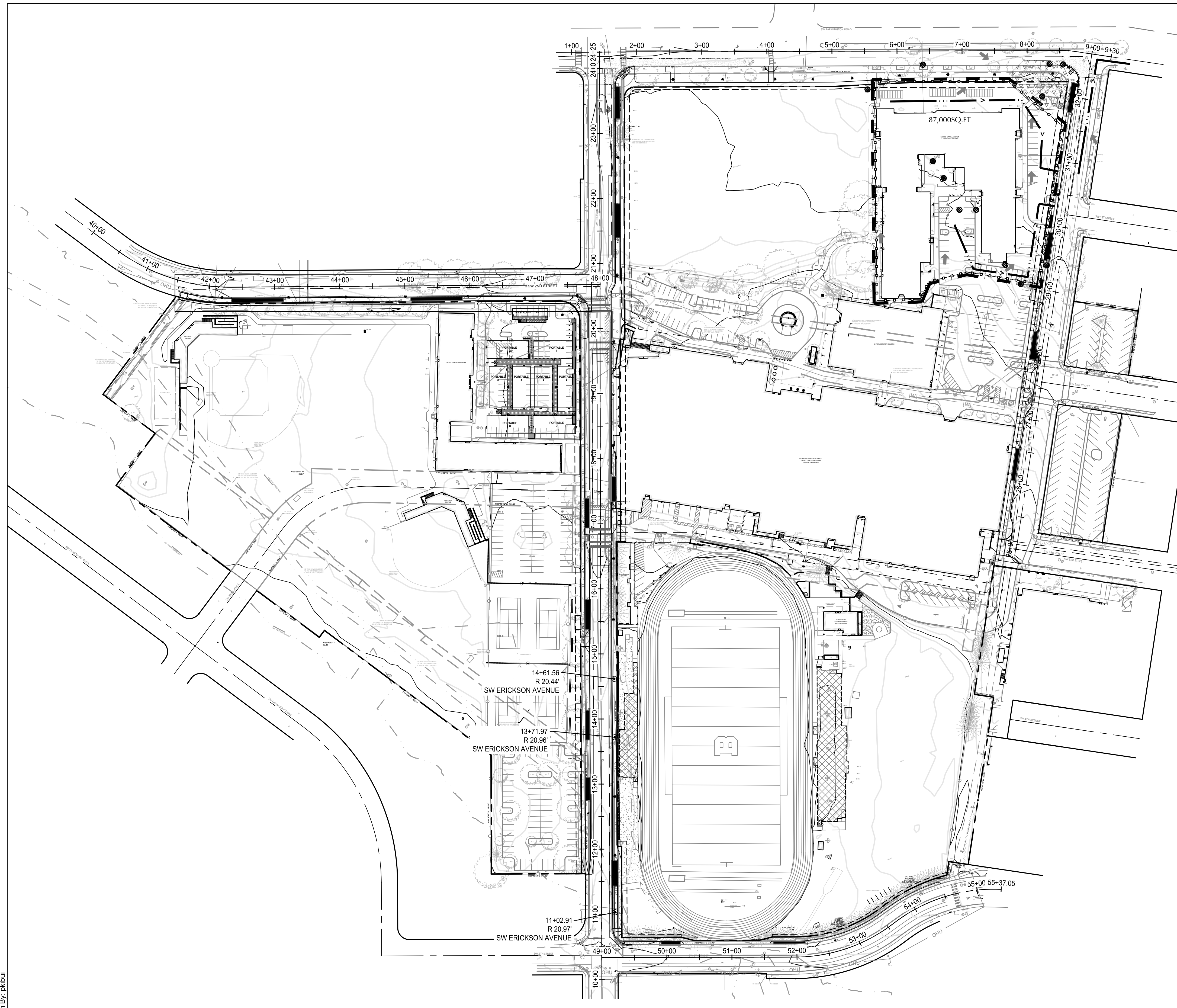
phase	LAND USE/100% DESIGN DEVELOPMENT SET
date	06/28/2023
project	21016

CONSTRUCTION PHASE 1

**PH.1**



File: N:\c\2023\12\100176\_BSD\_Beaverton-HS\CAD\PL\PHasing\2100176-C1.0-OV-PHASE-2.dwg TAB.PH.2  
 Plotted: 6/26/23 at 10:33am By: rtkhu

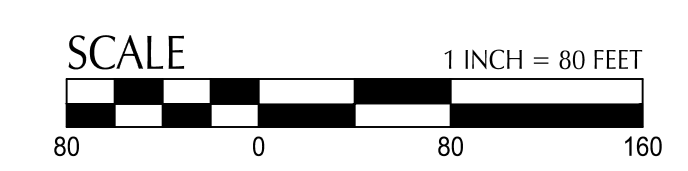
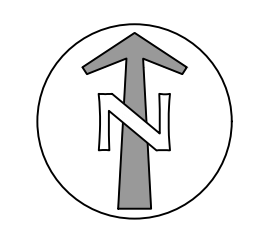


### PRE-CONSTRUCTION, CLEARING AND DEMOLITION NOTES

1. ALL BASE ESC MEASURES (INLET PROTECTION, PERIMETER SEDIMENT CONTROL FENCING, GRAVEL CONSTRUCTION ENTRANCES, ETC.) MUST BE IN PLACE, FUNCTIONAL AND APPROVED IN AN INITIAL INSPECTION PRIOR TO COMMENCEMENT OF CONSTRUCTION ACTIVITIES.
2. SEDIMENT BARRIERS APPROVED FOR USE INCLUDE SEDIMENT FENCE, BERMS CONSTRUCTED OUT OF MULCH, CHIPPINGS OR OTHER SUITABLE MATERIAL, STRAW WATTLES, OR OTHER APPROVED MATERIALS.
3. SENSITIVE RESOURCES INCLUDING, BUT NOT LIMITED TO, TREES, WETLANDS, AND RIPARIAN PROTECTION AREAS SHALL BE CLEARLY DELINEATED WITH ORANGE CONSTRUCTION FENCING OR CHAIN LINK FENCING IN A MANNER THAT IS CLEARLY VISIBLE TO ANYONE IN THE AREA. NO ACTIVITIES ARE PERMITTED TO OCCUR BEYOND THE CONSTRUCTION BARRIER.
4. CONSTRUCTION ENTRANCES SHALL BE INSTALLED AT THE BEGINNING OF CONSTRUCTION AND MAINTAINED FOR THE DURATION OF THE PROJECT. ADDITIONAL MEASURES INCLUDING, BUT NOT LIMITED TO, STREET SWEEPING AND VACUUMING MAY BE REQUIRED TO ENSURE THAT ALL PAVED AREAS ARE KEPT CLEAN FOR THE DURATION OF THE PROJECT.
5. RUN-ON AND RUN-OFF CONTROLS SHALL BE IN PLACE AND FUNCTIONING PRIOR TO BEGINNING SUBSTANTIAL CONSTRUCTION ACTIVITIES. RUN-ON AND RUN-OFF CONTROL MEASURES INCLUDE: SLOPE DRAINS (WITH OUTLET PROTECTION), CHECK DAM, SURFACE ROUGHENING AND BANK STABILIZATION.
6. THESE EROSION AND SEDIMENT CONTROL PLANS ASSUME "DRY WEATHER" CONSTRUCTION. "WET WEATHER" CONSTRUCTION MEASURES NEED TO BE APPLIED BETWEEN OCTOBER 1ST AND MAY 31ST.

### SHEET LEGEND

- PROPERTY LINE
- TEMPORARY STUDENT PATH WAY
- CONSTRUCTION HAUL ROUTE
- WORK LIMITS (SHOWN OFFSET FOR CLARITY)
- SEDIMENT CONTROL FENCING
- STRAW WATTLE
- CONCRETE WASH OUT
- INLET PROTECTION
- INSTALL CHECK DAM BIO-FILTER BAGS
- EXISTING CONTOUR MAJOR (195)
- EXISTING CONTOUR MINOR (193)
- GRAVEL CONSTRUCTION ENTRANCE
- DRAINAGE FLOW DIRECTION ARROW
- CONSTRUCTION PARKING, JOB TRAILER, STAGING, STORAGE AND LAY DOWN AREA
- SOIL STOCKPILE AREA WITH PROTECTIVE PLASTIC SHEETING
- PORTABLE TOILET
- HAZARDOUS MATERIAL AND WASTE STORAGE AND HANDLING AREA
- TIRE WASH
- TREE PROTECTION AREA. SEE SHEET C5.10 FOR TREE PROTECTION REQUIREMENTS



**BRIC**  
 ARCHITECTURE, INC.

**BEAVERTON**  
 SCHOOL DISTRICT

**kpff**

111 SW Fifth Ave., Suite 2600  
 Portland, OR 97204  
 O: 503.543.3860  
 F: 503.274.4681  
[www.kpff.com](http://www.kpff.com)

### BEAVERTON HIGH SCHOOL REBUILD

13000 SW 2ND STREET  
 BEAVERTON, OREGON 97005

### BEAVERTON SCHOOL DISTRICT

T 503-356-4500

revisions	

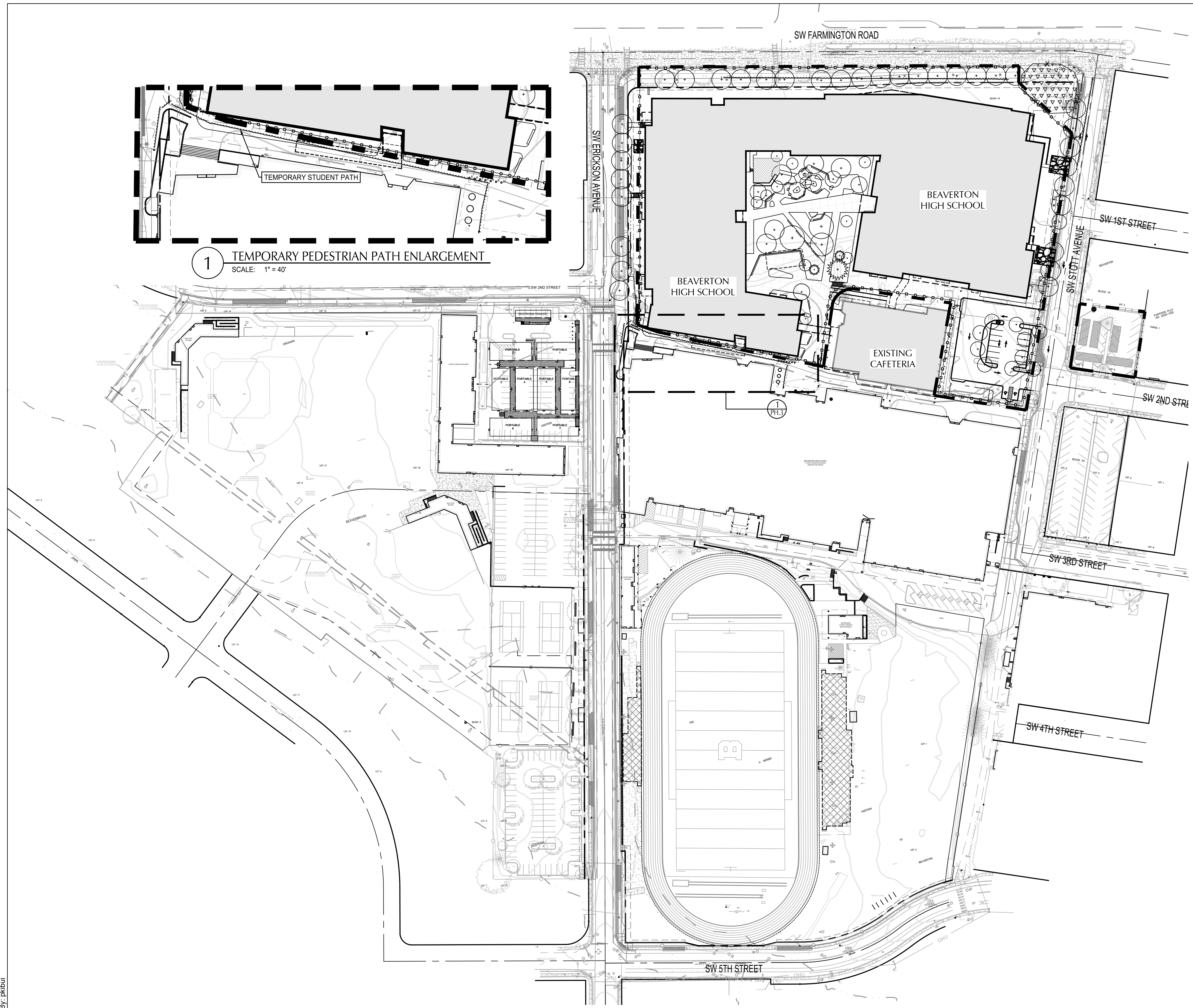
phase	LAND USE/100% DESIGN DEVELOPMENT SET
date	06/28/2023
project	21016

### CONSTRUCTION PHASE 2

**PH.2**



File: N:\c\2021\2100176\_BSD\_Beaverton-HS\CAD\PL\PH3\100176-C1-0-V-PHASE-3.dwg TAB:PH.3  
 Plotted: 6/28/23 at 10:33am By: rkhui

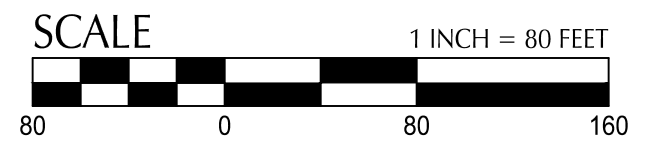
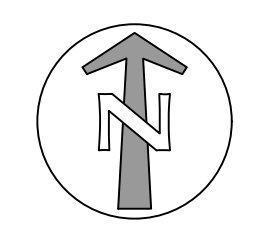


## PRE-CONSTRUCTION, CLEARING AND DEMOLITION NOTES

1. ALL BASE ESC MEASURES (INLET PROTECTION, PERIMETER SEDIMENT CONTROL FENCING, GRAVEL CONSTRUCTION ENTRANCES, ETC.) MUST BE IN PLACE, FUNCTIONAL AND APPROVED IN AN INITIAL INSPECTION PRIOR TO COMMENCEMENT OF CONSTRUCTION ACTIVITIES.
2. SEDIMENT BARRIERS APPROVED FOR USE INCLUDE SEDIMENT FENCE, BERMS CONSTRUCTED OUT OF MULCH, CHIPPINGS OR OTHER SUITABLE MATERIAL, STRAW WATTLES, OR OTHER APPROVED MATERIALS.
3. SENSITIVE RESOURCES INCLUDING, BUT NOT LIMITED TO, TREES, WETLANDS, AND RIPARIAN PROTECTION AREAS SHALL BE CLEARLY DELINEATED WITH ORANGE CONSTRUCTION FENCING OR CHAIN LINK FENCING IN A MANNER THAT IS CLEARLY VISIBLE TO ANYONE IN THE AREA. NO ACTIVITIES ARE PERMITTED TO OCCUR BEYOND THE CONSTRUCTION BARRIER.
4. CONSTRUCTION ENTRANCES SHALL BE INSTALLED AT THE BEGINNING OF CONSTRUCTION AND MAINTAINED FOR THE DURATION OF THE PROJECT. ADDITIONAL MEASURES INCLUDING, BUT NOT LIMITED TO, STREET SWEEPING AND VACUUMING MAY BE REQUIRED TO ENSURE THAT ALL PAVED AREAS ARE KEPT CLEAN FOR THE DURATION OF THE PROJECT.
5. RUN-ON AND RUN-OFF CONTROLS SHALL BE IN PLACE AND FUNCTIONING PRIOR TO BEGINNING SUBSTANTIAL CONSTRUCTION ACTIVITIES. RUN-ON AND RUN-OFF CONTROL MEASURES INCLUDE: SLOPE DRAINS (WITH OUTLET PROTECTION), CHECK DAM, SURFACE ROUGHENING AND BANK STABILIZATION.
6. THESE EROSION AND SEDIMENT CONTROL PLANS ASSUME "DRY WEATHER" CONSTRUCTION. "WET WEATHER" CONSTRUCTION MEASURES NEED TO BE APPLIED BETWEEN OCTOBER 1ST AND MAY 31ST.

## SHEET LEGEND

- PROPERTY LINE
- TEMPORARY STUDENT PATH WAY
- CONSTRUCTION HAUL ROUTE
- WORK LIMITS (SHOWN OFFSET FOR CLARITY)
- SEDIMENT CONTROL FENCING
- STRAW WATTLE
- CONCRETE WASH OUT
- INLET PROTECTION
- INSTALL CHECK DAM BIO-FILTER BAGS
- EXISTING CONTOUR MAJOR
- EXISTING CONTOUR MINOR
- GRAVEL CONSTRUCTION ENTRANCE
- DRAINAGE FLOW DIRECTION ARROW
- CONSTRUCTION PARKING, JOB TRAILER, STAGING, STORAGE, AND LAY DOWN AREA
- SOIL STOCKPILE AREA WITH PROTECTIVE PLASTIC SHEETING
- PORTABLE TOILET
- HAZARDOUS MATERIAL AND WASTE STORAGE AND HANDLING AREA
- TIRE WASH
- TREE PROTECTION AREA. SEE SHEET C5.10 FOR TREE PROTECTION REQUIREMENTS



**BRIC**  
ARCHITECTURE, INC.

**BEAVERTON**  
SCHOOL DISTRICT

**kpff**

111 SW Fifth Ave., Suite 2600  
 Portland, OR 97204  
 O: 503.542.3860  
 F: 503.274.4681  
[www.kpff.com](http://www.kpff.com)

### BEAVERTON HIGH SCHOOL REBUILD

13000 SW 2ND STREET  
 BEAVERTON, OREGON 97005

BEAVERTON SCHOOL DISTRICT

T 503-356-4500

revisions	

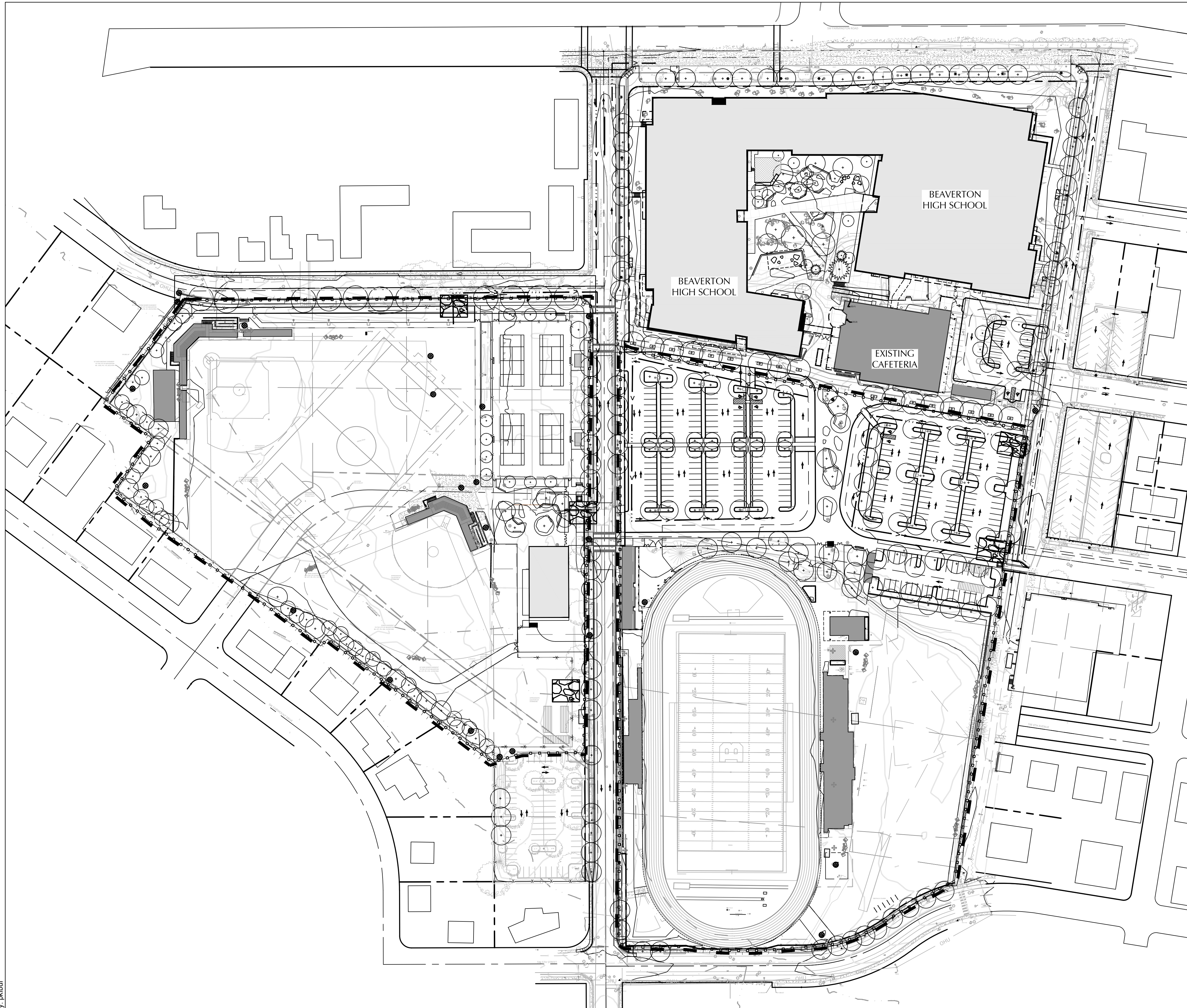
phase	LAND USE/100% DESIGN DEVELOPMENT SET
date	06/28/2023
project	21016

CONSTRUCTION PHASE 3

**PH.3**



File: N:\c\2023\12\00176\_BSD\_Beaverton-HS\CAD\PL\PHASING\2100176-C1.0-OV-PHASE-4.dwg TAB:PH.4  
 Plotted: 6/28/23 at 10:33am By: rkhui



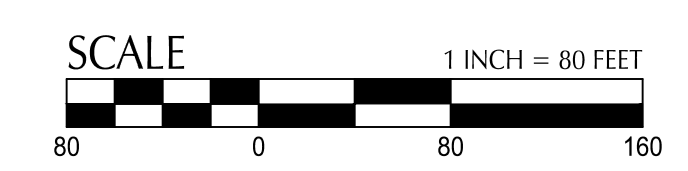
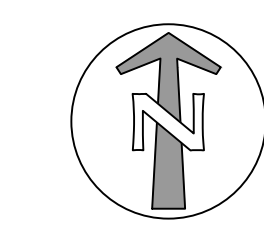
--- CIVIL LIMITS

### PRE-CONSTRUCTION, CLEARING AND DEMOLITION NOTES

1. ALL BASE ESC MEASURES (INLET PROTECTION, PERIMETER SEDIMENT CONTROL FENCING, GRAVEL CONSTRUCTION ENTRANCES, ETC.) MUST BE IN PLACE, FUNCTIONAL AND APPROVED IN AN INITIAL INSPECTION PRIOR TO COMMENCEMENT OF CONSTRUCTION ACTIVITIES.
2. SEDIMENT BARRIERS APPROVED FOR USE INCLUDE SEDIMENT FENCE, BERMS CONSTRUCTED OUT OF MULCH, CHIPPINGS OR OTHER SUITABLE MATERIAL, STRAW WATTLES, OR OTHER APPROVED MATERIALS.
3. SENSITIVE RESOURCES INCLUDING, BUT NOT LIMITED TO, TREES, WETLANDS, AND RIPARIAN PROTECTION AREAS SHALL BE CLEARLY DELINEATED WITH ORANGE CONSTRUCTION FENCING OR CHAIN LINK FENCING IN A MANNER THAT IS CLEARLY VISIBLE TO ANYONE IN THE AREA. NO ACTIVITIES ARE PERMITTED TO OCCUR BEYOND THE CONSTRUCTION BARRIER.
4. CONSTRUCTION ENTRANCES SHALL BE INSTALLED AT THE BEGINNING OF CONSTRUCTION AND MAINTAINED FOR THE DURATION OF THE PROJECT. ADDITIONAL MEASURES INCLUDING, BUT NOT LIMITED TO, STREET SWEEPING AND VACUUMING MAY BE REQUIRED TO ENSURE THAT ALL PAVED AREAS ARE KEPT CLEAN FOR THE DURATION OF THE PROJECT.
5. RUN-ON AND RUN-OFF CONTROLS SHALL BE IN PLACE AND FUNCTIONING PRIOR TO BEGINNING SUBSTANTIAL CONSTRUCTION ACTIVITIES. RUN-ON AND RUN-OFF CONTROL MEASURES INCLUDE: SLOPE DRAINS (WITH OUTLET PROTECTION), CHECK DAM, SURFACE ROUGHENING AND BANK STABILIZATION.
6. THESE EROSION AND SEDIMENT CONTROL PLANS ASSUME "DRY WEATHER" CONSTRUCTION. "WET WEATHER" CONSTRUCTION MEASURES NEED TO BE APPLIED BETWEEN OCTOBER 1ST AND MAY 31ST.

### SHEET LEGEND

- PROPERTY LINE
- TEMPORARY STUDENT PATH WAY
- CONSTRUCTION HAUL ROUTE
- WORK LIMITS (SHOWN OFFSET FOR CLARITY)
- SEDIMENT CONTROL FENCING
- STRAW WATTLE
- CONCRETE WASH OUT
- ⊗ INLET PROTECTION
- ⊗ INSTALL CHECK DAM BIO-FILTER BAGS
- (195) --- EXISTING CONTOUR MAJOR
- (193) --- EXISTING CONTOUR MINOR
- GRAVEL CONSTRUCTION ENTRANCE
- ← DRAINAGE FLOW DIRECTION ARROW
- CONSTRUCTION PARKING, JOB TRAILER STAGING, STORAGE AND LAY DOWN AREA
- SOIL STOCKPILE AREA WITH PROTECTIVE PLASTIC SHEETING
- T PORTABLE TOILET
- H HAZARDOUS MATERIAL AND WASTE STORAGE AND HANDLING AREA
- TIRE WASH
- TREE PROTECTION AREA. SEE SHEET C5.10 FOR TREE PROTECTION REQUIREMENTS



111 SW Fifth Ave., Suite 2600  
 Portland, OR 97204  
 O: 503.542.3860  
 F: 503.274.4681  
[www.kpff.com](http://www.kpff.com)

### BEAVERTON HIGH SCHOOL REBUILD

13000 SW 2ND STREET  
 BEAVERTON, OREGON 97005

### BEAVERTON SCHOOL DISTRICT

T 503-356-4500

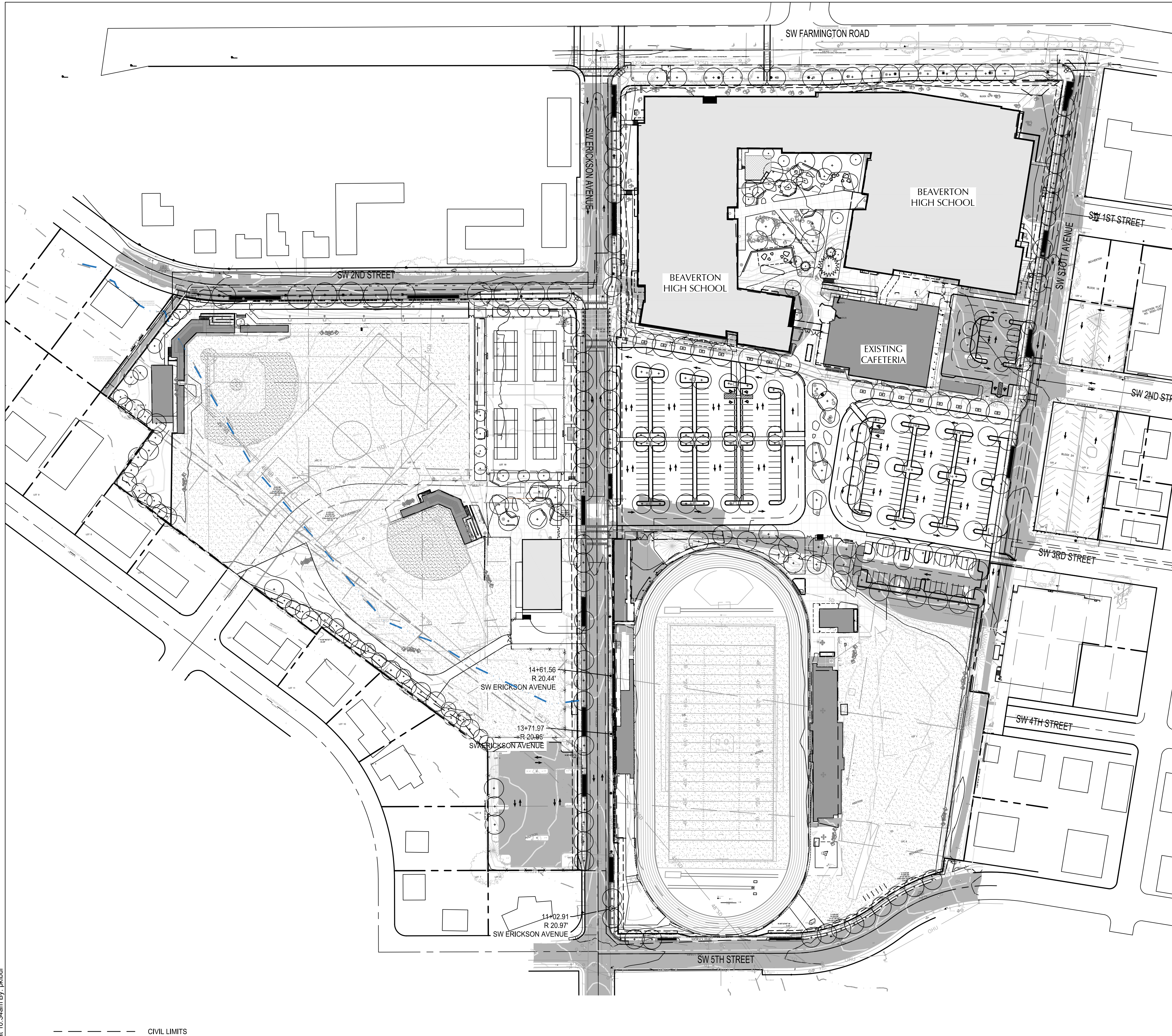
revisions	

phase	LAND USE/100% DESIGN DEVELOPMENT SET
date	06/28/2023
project	21016

### CONSTRUCTION PHASE 4

# PH.4





## PRE-CONSTRUCTION, CLEARING AND DEMOLITION NOTES

1. ALL BASE ESC MEASURES (INLET PROTECTION, PERIMETER SEDIMENT CONTROL FENCING, GRAVEL CONSTRUCTION ENTRANCES, ETC.) MUST BE IN PLACE, FUNCTIONAL AND APPROVED IN AN INITIAL INSPECTION PRIOR TO COMMENCEMENT OF CONSTRUCTION ACTIVITIES.
2. SEDIMENT BARRIERS APPROVED FOR USE INCLUDE SEDIMENT FENCE, BERMS CONSTRUCTED OUT OF MULCH, CHIPPINGS OR OTHER SUITABLE MATERIAL, STRAW WATTLES, OR OTHER APPROVED MATERIALS.
3. SENSITIVE RESOURCES INCLUDING, BUT NOT LIMITED TO, TREES, WETLANDS, AND RIPARIAN PROTECTION AREAS SHALL BE CLEARLY DELINEATED WITH ORANGE CONSTRUCTION FENCING OR CHAIN LINK FENCING IN A MANNER THAT IS CLEARLY VISIBLE TO ANYONE IN THE AREA. NO ACTIVITIES ARE PERMITTED TO OCCUR BEYOND THE CONSTRUCTION BARRIER.
4. CONSTRUCTION ENTRANCES SHALL BE INSTALLED AT THE BEGINNING OF CONSTRUCTION AND MAINTAINED FOR THE DURATION OF THE PROJECT. ADDITIONAL MEASURES INCLUDING, BUT NOT LIMITED TO, STREET SWEEPING AND VACUUMING MAY BE REQUIRED TO ENSURE THAT ALL PAVED AREAS ARE KEPT CLEAN FOR THE DURATION OF THE PROJECT.
5. RUN-ON AND RUN-OFF CONTROLS SHALL BE IN PLACE AND FUNCTIONING PRIOR TO BEGINNING SUBSTANTIAL CONSTRUCTION ACTIVITIES. RUN-ON AND RUN-OFF CONTROL MEASURES INCLUDE: SLOPE DRAINS (WITH OUTLET PROTECTION), CHECK DAM, SURFACE ROUGHENING AND BANK STABILIZATION.
6. THESE EROSION AND SEDIMENT CONTROL PLANS ASSUME "DRY WEATHER" CONSTRUCTION. "WET WEATHER" CONSTRUCTION MEASURES NEED TO BE APPLIED BETWEEN OCTOBER 1ST AND MAY 31ST.

## SHEET LEGEND

- PROPERTY LINE
- TEMPORARY STUDENT PATH WAY
- CONSTRUCTION HAUL ROUTE
- WORK LIMITS (SHOWN OFFSET FOR CLARITY)
- SEDIMENT CONTROL FENCING
- STRAW WATTLE
- CONCRETE WASH OUT
- INLET PROTECTION
- INSTALL CHECK DAM BIO-FILTER BAGS
- EXISTING CONTOUR MAJOR
- EXISTING CONTOUR MINOR
- GRAVEL CONSTRUCTION ENTRANCE
- DRAINAGE FLOW DIRECTION ARROW
- CONSTRUCTION PARKING, JOB TRAILER, STAGING, STORAGE AND LAY DOWN AREA
- SOIL STOCKPILE AREA WITH PROTECTIVE PLASTIC SHEETING
- PORTABLE TOILET
- HAZARDOUS MATERIAL AND WASTE STORAGE AND HANDLING AREA
- TIRE WASH
- TREE PROTECTION AREA. SEE SHEET C5.10 FOR TREE PROTECTION REQUIREMENTS

### BEAVERTON HIGH SCHOOL REBUILD

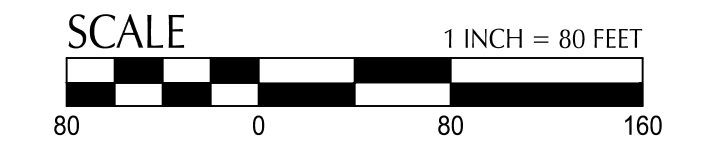
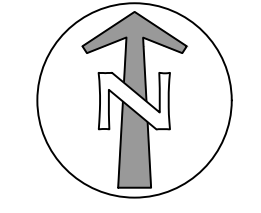
13000 SW 2ND STREET  
BEAVERTON, OREGON 97005

BEAVERTON SCHOOL DISTRICT  
T 503-356-4500

revisions	

phase	LAND USE/100% DESIGN DEVELOPMENT SET
date	06/28/2023
project	21016

CONSTRUCTION PHASE 5  
**PH.5**



File: N:\c\2023\12\00178\_BSD\_Beaverton-HS\CAD\PILOT\Phasing\2100178-C1.0-OV-PHASE-5.dwg TAB.PH.5  
Plotted: 6/28/23 at 10:34am By: rkhui

--- CIVIL LIMITS